

1-877-903-7246

# TRENCH DRAIN SUPPLY

www.trenchdrainsupply.com

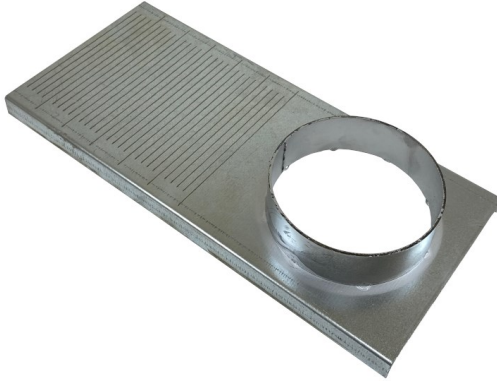
Number

**U100K Accessories**

Series

**U100K**

Galvanized Steel



End Outlet	Closed Encap	Min Height (in)	Max Height (in)
T100KxxA	T100KxxC	5.9	11.81



**CS100-T**



**CS100-H**

CS100 -H and CS100-T are locking devices to be used with the U100K and D100 series trench drain.

CS100-H is to be used with ductile iron or composite grates  
(**except for FNX100KCCM**)

CS100-T is to be used with galvanized and stainless steel grates

Manufacturer



Specification

ULMA U100K Accessories  
SUPPLIED BY TRENCH DRAIN SUPPLY

DISCLAIMER - The customer and the customer's architects, engineers, consultants, and other professionals are completely responsible for the selection installation and maintenance of any product purchased from Trench Drain Supply and/or its manufacturers. TRENCH DRAIN SUPPLY MAKES NO WARRANTY, EXPRESS OR IMPLIED, AS TO THE SUITABILITY, DESIGN, MERCHANTABILITY, OR FITNESS OF THE PRODUCT FOR CUSTOMERS APPLICATION. The drawing and information provided remain the property and copyright of the manufacturer listed. The manufacturer reserves the right to modify specification without notice.